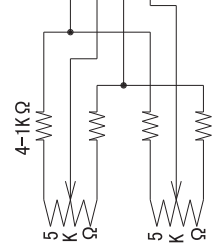


① IRIS CABLE

(+)	RED	INPUT	VOLTAGE
(-)	BLACK	GROUND	
	WHITE	VIDEO SIGNAL	
	GREEN	REMOTE CONTROL	

② MOTOR CABLE

(+)	BROWN	FOCUS NEAR
(+)	BLACK	FOCUS FAR
(+)	YELLOW	ZOOM IN
(+)	RED	ZOOM OUT

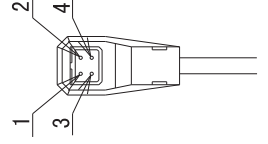


SPECIFICATION

1. USE	FOR 1/2" COLOR . B/W CAMERA		
2. FOCAL LENGTH	f=30~750mm		
3. IRIS RANGE	F= 4.6 ~ 720		
4. IMAGE SIZE	φ 8 (6.4 x 4.8)		
5. BACK FOCAL LENGTH	35.4 mm	in air	
6. FLANGE FOCAL LENGTH	17.526 mm	in air	
7. FOCUS RANGE	∞ ~ 2.5 m		
8. FIELD ANGLE	DIA. (W)	14.6 ° (T)	0.62 °
	HOL.	11.8 °	0.50 °
	VER.	8.8 °	0.37 °
9. DISTORTION (TV)	0.10 %		0.20%
10. LENS CONSTRUCTION	12 GROUPS	16 ELEMENTS	
11. CLEAR APERTURE	FRONT φ 104	REAR φ 11.7	
12. WEIGHT	2.72Kg (XAP)		

DC (DIRECT CONTROL)

DRIVE	RESISTOR	190 Ω (20° C)
COIL	COLOR	RED (+) 4pin
		BLACK 3pin
BRAKE	RESISTOR	1150 Ω (20° C)
COIL	COLOR	YELLOW (+) 2pin
		GREEN 1pin
DRIVE	OPEN	LESS THAN +4V
VOLT.	CLOSE	OVER THAN 0V
		W/CLIPPING SPRING



1/2" F4.6/30-750mm

CP963D, DP

CP963A, AP

CP963XA, XAP